

**Mon., November 5, 2018** GA

- Complete warm-up.
- P. 1 and 3: Clear table and wait for instruction.
- P. 5 and 6: Collect note sheet from the front table.



Warm-up: Answer the following in at least 2-3 complete sentences.

This portrait has CONTRAST, a principle of design.

What is CONTRAST?

Which element of art is being contrasted in this work?

Today, we will:

P. 1: Weave

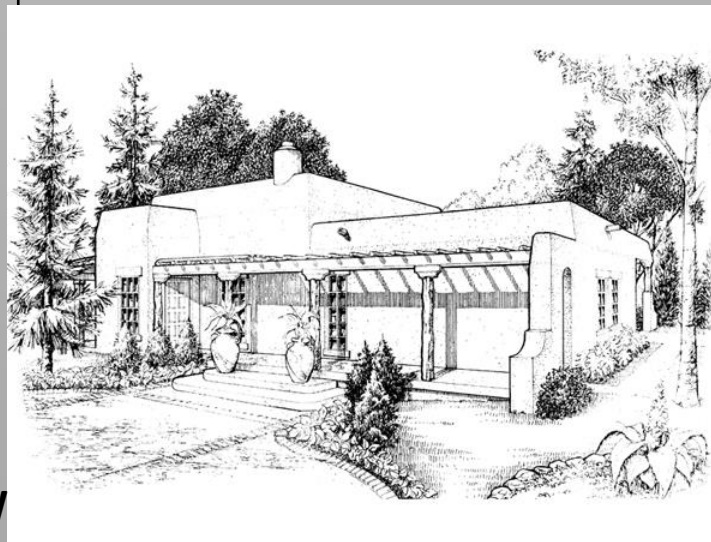
P. 3: Paint monsters

P. 5: Introduce Greek Vases

P. 6: Introduce Greek Vases

Periods 3 and 5: retakes for clay quiz TOMORROW

**SB3: Your Home, Due 11/7 or 11/8**



**Draw your home and what's around it.**

- Make it look realistic, add details.
- Fill the page
- Color/Shade

**Mon., November 5, 2018** Intro

- Collect sketchbook.
- Complete warm-up.
- Open sketchbook to next clean page.

Warm-up: Answer the following in 3-5 complete sentences.

Think about creating your self-portrait . . .

- In what profession/vocation would depict yourself? What emotion would you be expressing?
- Is there anything else you would attempt to communicate about yourself?

**Today, we will:**  
Self –portrait activity

**Learning Goals:**

- Student will identify visual characteristics of portraits from various styles.
- Student will discuss how portraits are used to communicate stories, ideas and emotions.
- Student will Identify, select, and use elements and principles to organize the composition in his/her own artwork (TEXTURE).

**SB3: Inspired artwork; due 11/8**

Create a sketch inspired by the work of a famous artist... don't copy it, just draw something using the artist's style.



**Tues., November 6, 2018** GA

- Complete warm-up.
- Clear table and wait for instruction.



Warm-up: Answer the following in at least 2-3 complete sentences.

Interpretation is thinking about what an artist is telling us (the viewers) with his/her artwork. What do YOU THINK this sculpture might mean? Why do you think so?

Willy Verginer

Today, we will:

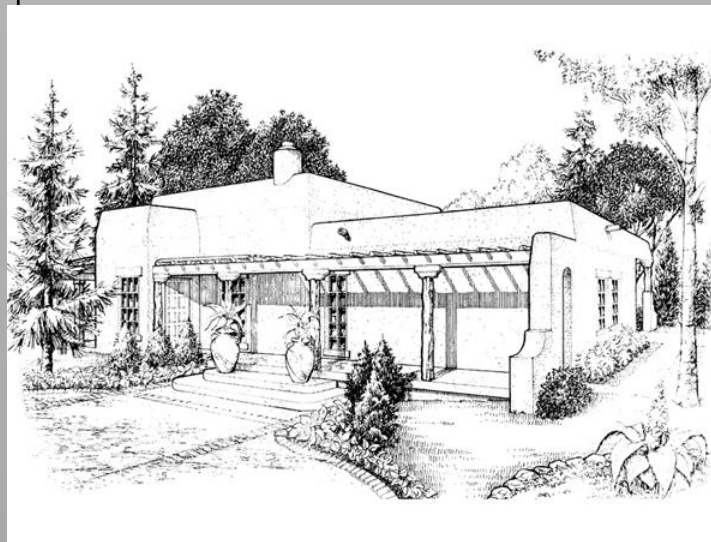
P. 1: Weave

P. 3: Finish painting monsters; QUIZ  
RETAKES

P. 5: Introduce mythology; QUIZ  
RETAKES

P. 6: Introduce mythology

**SB3: Your Home, Due 11/7 or 11/8**



**Draw your home and what's around it.**

- Make it look realistic, add details.
- Fill the page
- Color/Shade

**Tues., November 6, 2018** Intro

➤ **Complete warm-up.**



Warm-up: Answer the following in at least 3-5 complete sentences.

Interpretation is thinking about what an artist is telling us (the viewers) with his/her artwork. What do YOU THINK this sculpture might mean? Why do you think so?

Willy Verginer

**Today, we will:**  
**Complete Self-portraits**

**Learning Goals:**

- Student will identify visual characteristics of portraits from various styles.
- Student will discuss how portraits are used to communicate stories, ideas and emotions.
- Student will Identify, select, and use elements and principles to organize the composition in his/her own artwork (TEXTURE).

**SB3: Inspired artwork; due 11/8**

Create a sketch inspired by the work of a famous artist... don't copy it, just draw something using the artist's style.



**Wed., November 7, 2018** GA

- Turn in sketchbook
- Period 1: collect loom
- Period 3: collect notes outline from front table
- Period 5: Clear table; put down tablecloth

Today, we will:

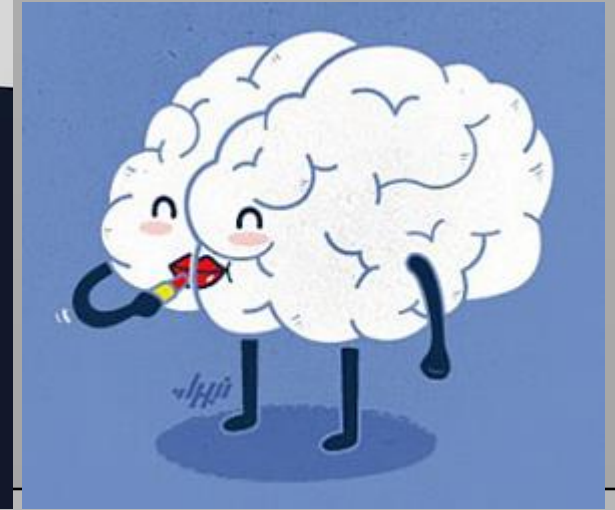
Period 1: Complete weavings

Period 3: Introduce weaving; warp looms

Period 5: Paint monsters 😊



Can you solve these visual puns?



### **SB4: Fridge, Due 11/14 or 15**

**What is in the fridge?**

- Draw the contents of your refrigerator at home
- Add shading or color
- Fill the page

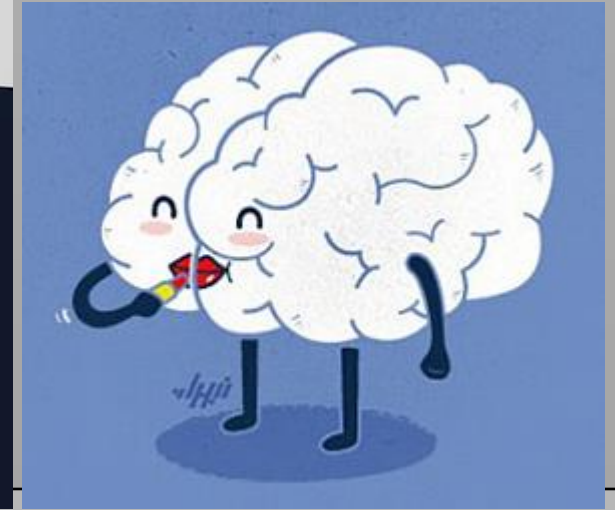


Thur., November 8, 2018 **Intro**

- Turn in sketchbook
- Clear table and remove tablecloth



Can you solve these visual puns?



Today, we will:

- Construct our slab portraits

**SB 4 and 5: Due 11/15**

4: A still life made from 5 things in your pantry or cabinet



5: Free sketch



Thur., November 8, 2018 GA

- Turn in sketchbook
- Pull out mythology notes and a pencil



Can you solve these visual puns?



Today, we will:

- Finish Mythology Intro
- Step 1 of project
- Begin research

**SB4: Fridge, Due 11/14 or 15**

**What is in the fridge?**

- Draw the contents of your refrigerator at home
- Add shading or color
- Fill the page



**Fri., November 9, 2018** GA

- Collect sketchbook
- Complete warm-up
- P. 1: collect note sheet
- P. 3: clear table
- P. 5: open to myth notes
- P. 6: open to myth summary



Answer the following in 2-3 complete sentences:

The works to the left are **functional artwork**. What does this term mean? If you were to make one of these cases, which famous person would you select? Why?

**Today, we will:**

- P. 1: intro yarn painting, sketches
- P. 3: weave—tabby
- P. 5: finish myth intro, step 1
- P. 6: myth selection, vase sketch

**SB4: Fridge, Due 11/14 or 15**

**What is in the fridge?**

- Draw the contents of your refrigerator at home
- Add shading or color
- Fill the page





Fri., November 9, 2018 Intr

- Collect sketchbook
- Complete warm-up



Answer the following in 3-5 complete sentences:

The works to the left are **functional artwork**. What do you think this term means? If you were to make one of these cases, which famous person would you select? Why?

**Today, we will:**

- Introduce Op Art

**SB 4 and 5: Due 11/15**

**4: A still life made from 5 things in your pantry or cabinet**

**5: Free sketch**

